

Belt weighing unit EK

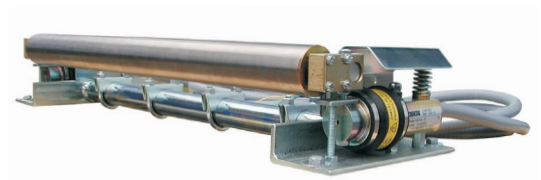
EK - For flat and light material

Belt weighing unit model EK is used in belt conveyors with a capacity range of approximately 0,5-30 t/h.

The belt weighing unit is designed for mounting on the conveyor frame.

Belt weighing module EK include:

- Trimming screws for the rollers, allowing for easy and accurate adjustment.
- Light roller with ball bearings.
- Two load cells for conversion of the load to an electrical signal.
- Overload protection for the load cells.
- Splash guard for each load cell.



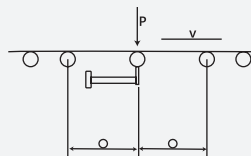
Specifications

| | |
|----------------------------|-----------|
| Rated load for load cells: | 2 x 15 kg |
| Material weight 'P': | 3-20 kg |
| Maximum belt weight: | 10 kg |

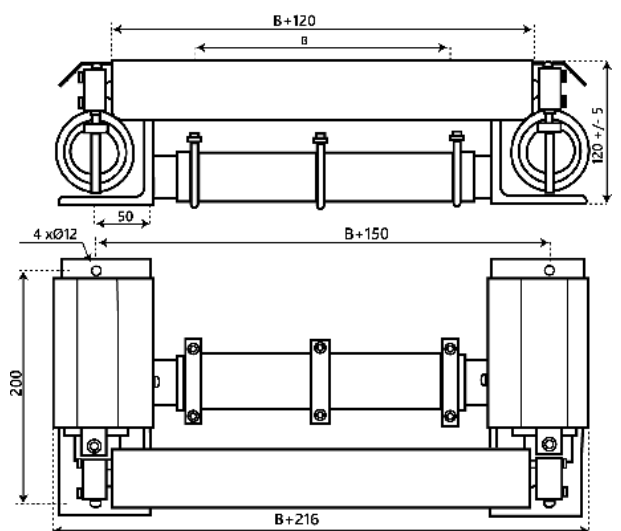
P is calculated using formula:

$$P = (Q \cdot a) / (3600 \cdot v)$$

Q= conveyor capacity in kg/h
 a= idler pitch in weighing section in m
 v= belt speed in m/s



Dimensions



| Designation and belt widths in mm. | |
|------------------------------------|----------|
| EK-B400 | EK-B700 |
| EK-B500 | EK-B800 |
| EK-B600 | EK-B900 |
| EK-B650 | EK-B1000 |